

MB Seamless Travel solutions including a “Smart Corridor”

Jasmina Simić

Mühlbauer Group



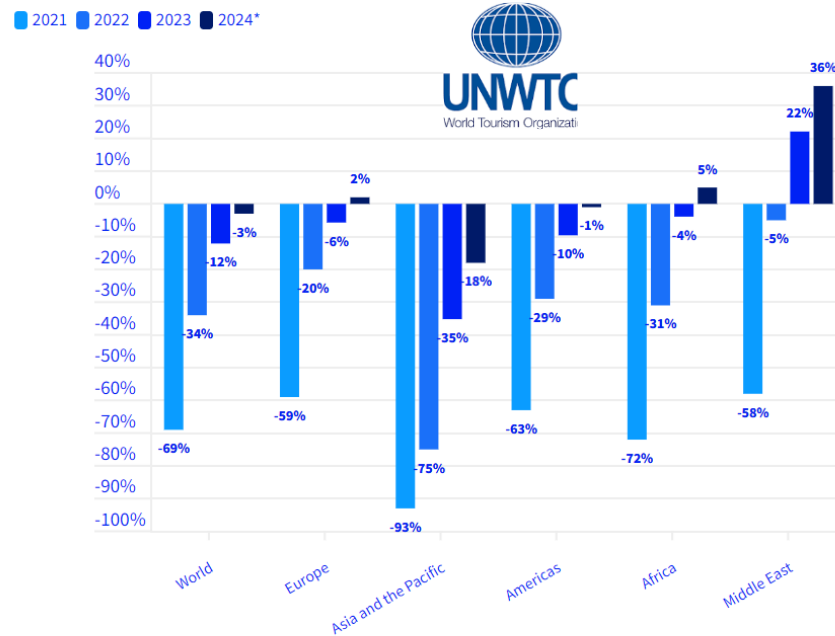
Process Overview





- Travel & Tourism recovery:
Reaching pre-pandemic in 2024
- USD1.4 trillion industry in 2023
- Are you prepared for the next wave?**

International Tourist Arrivals (% change over 2019)



Source: UN Tourism | World Tourism Organization © + % change over 2019 | * Preliminary figures
Data as collected by UN Tourism, May 2024. Published: 21/05/2024

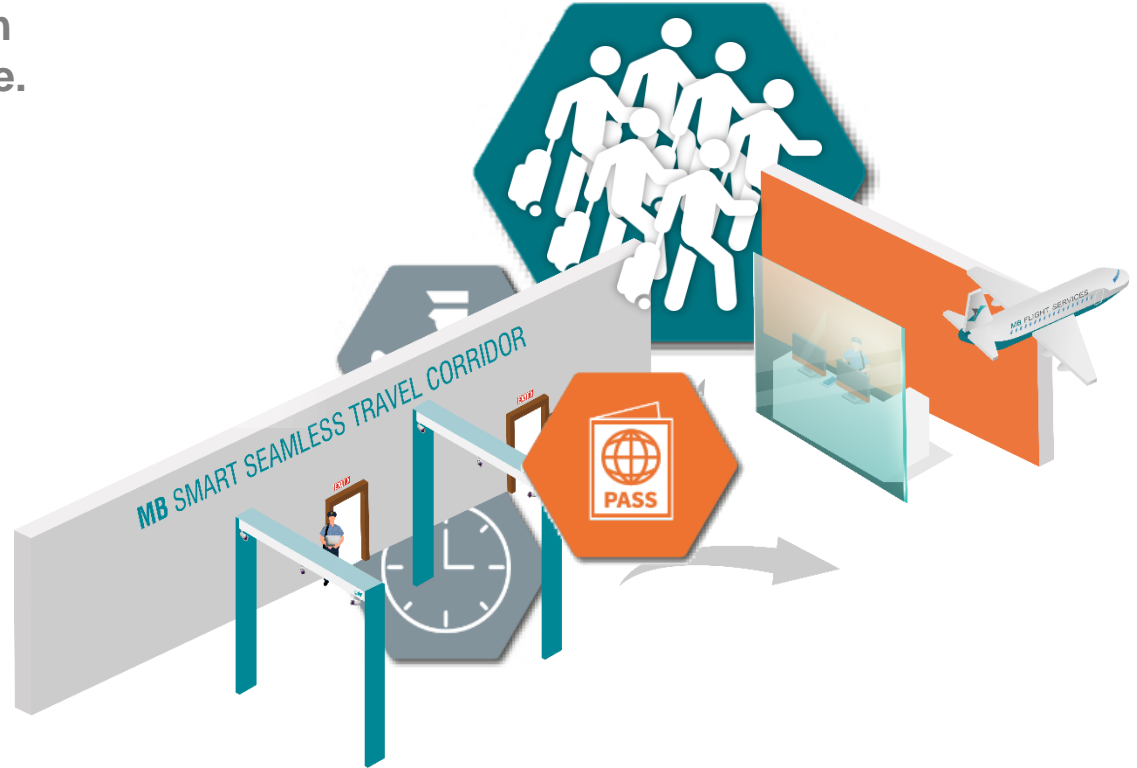


Globalization led to increase in number of travellers worldwide.

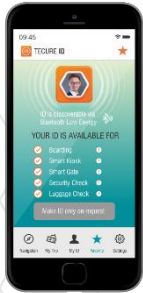
Existing infrastructure running at bottleneck

Delay in border crossing & unfavourable experience

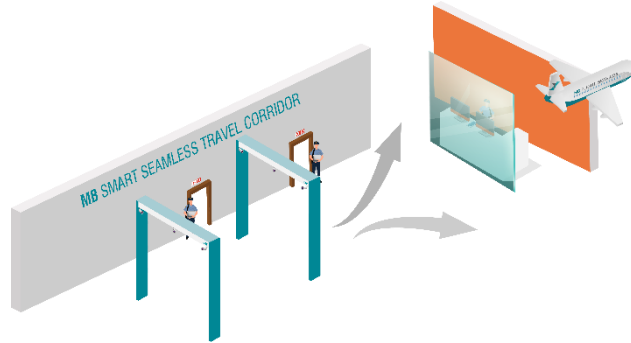
New solution is needed !!!



VERIFICATION/ENROLMENT ONLINE VIA SMARTPHONE



AUTHENTICATION CONTACTLESS CORRIDOR



TOUCHPOINTS (BAGDROP, SECURITY CONTROL, BOARDING ETC)



Smart Seamless Travel Corridor: Concept Advantages

Without document presentation

Without active user interaction

Biometric Identification & Tracking

Portability & Easy Deployment at airport, land & sea border

Security & Privacy by Design

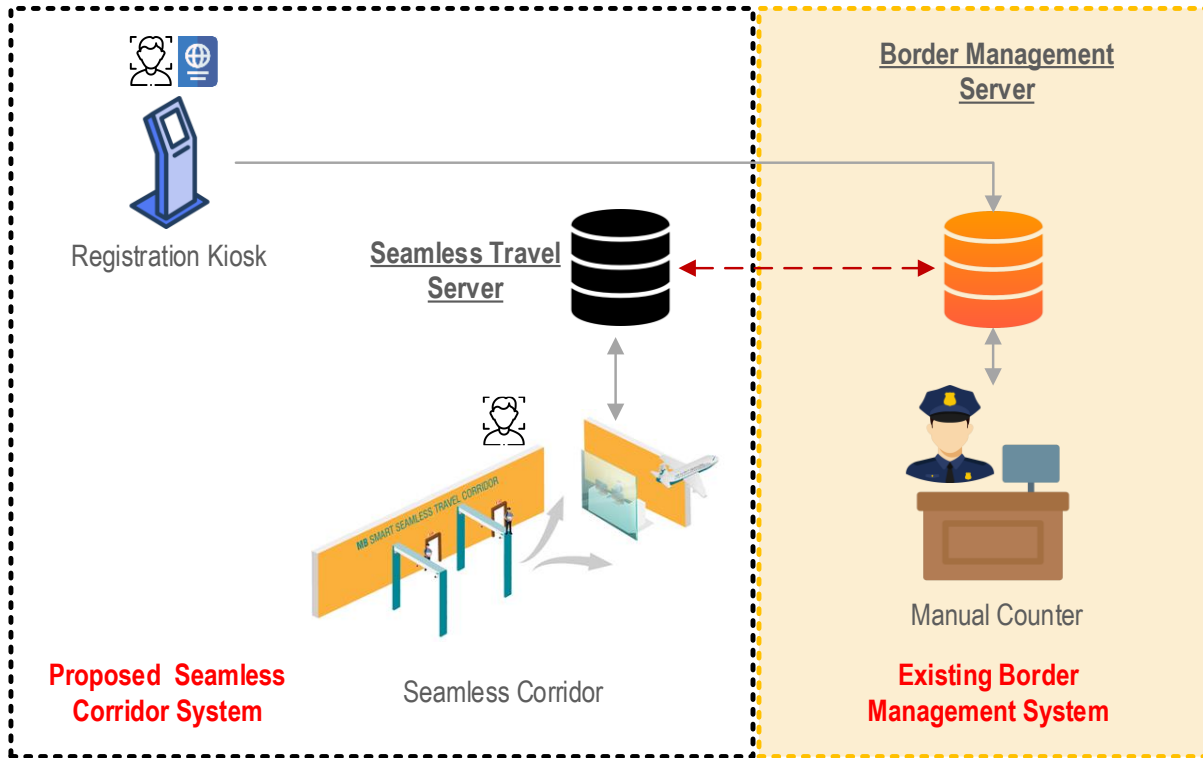


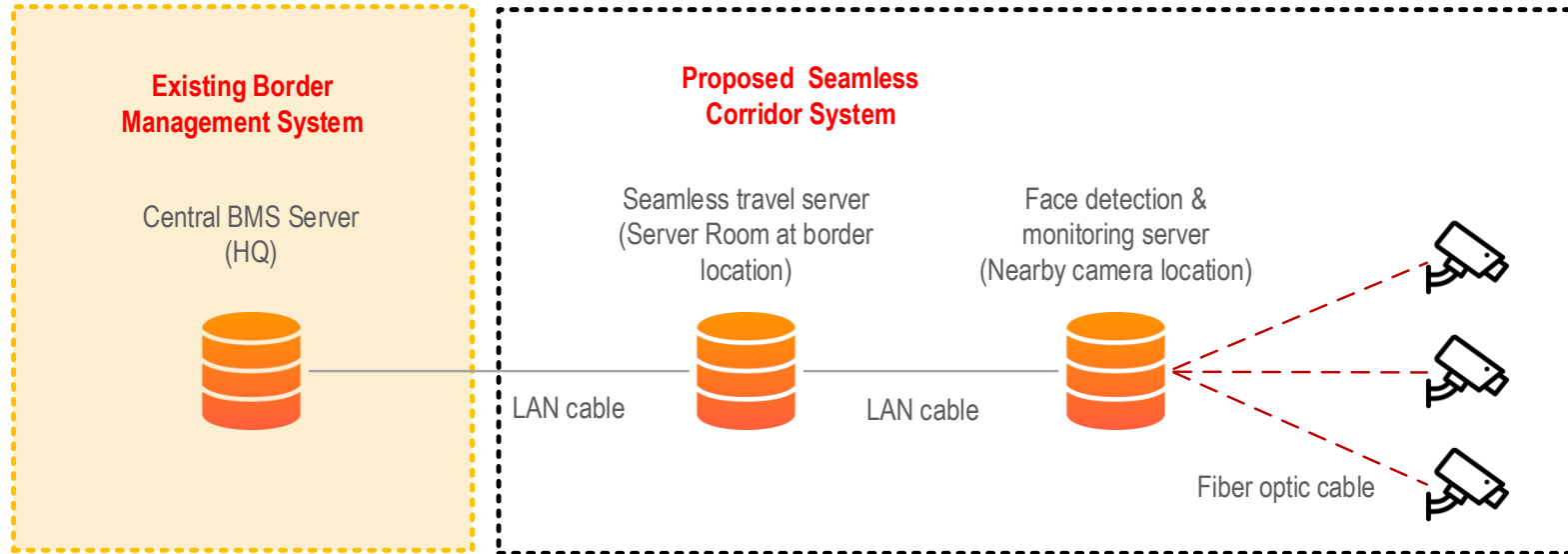
- The Seamless Travel Server does not need personal data, just a face image and an unique ID
- The informed consent is obtained during the registration (GDPR compliance)
- If an advanced passenger information is available, only the data face image and unique ID need to be pre-loaded into the gallery
- Face image quality assessment according to OFIQ from German BSI
- The retention periods of biometric information can be configured





Seamless Corridor Concept







- Based on machine learning & artificial intelligence
- Capture people in random group constellations even without active cooperation
 - Children
 - Persons in wheelchairs
- Tracks persons throughout the corridor
- Throughput around 3 times higher than with e-Gates, based on the same footprint
- No interaction necessary
- Pre registration based on eMRTD or digital ID like mDL or DTC
- Integratable in existing Border Management Solutions



Infrastructure and hardware requirements:

- Mini Computers
- Cameras are mounted on existing walls/pillars or dedicated frames
- Doors/openings need to escort travellers
- Booth needed for border police staff
- Standard existing lighting conditions



Increase border crossing throughput

More efficient personnel utilization

Improve security utilizing biometric

Easy integration in existing solutions





Thank you for your attention.

Please visit us at the booth in the exhibition room

